
Schnucks

The Friendliest Store in Cape Girardeau!

19 South Kingshighway, Cape Girardeau

Salutes

The

Cape Girardeau Bicentennial

and Welcomes

The Compton Heights Concert Band
of St. Louis

"Music in the Sousa Tradition"



The Cape Girardeau Bicentennial Commission
presents

An Old Fashioned Band Concert

featuring

**The Compton Heights
Concert Band of St. Louis**
Dr. Gregory C. Fox, Conductor

with soloists

Robert Ellison, Baritone Vocalist

Omer Creech, Euphonium

and the

1812 Overture

with a spectacular fireworks finale!



Labor Day Evening

Monday, September 6, 1993

6 - 8 p.m.

Capaha Park Bandshell

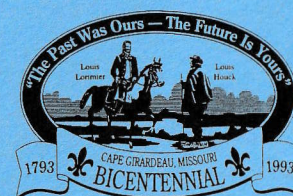
Broadway & Perry

Cape Girardeau, Missouri

Free Admission

Sponsored by the Cape Girardeau Bicentennial Commission; The Southeast Missouri Council on the Arts; Missouri Arts Council Touring Program; The Compton Heights Concert Band of St. Louis; The Music Performance Trust Funds as arranged by Local 2-197, American Federation of Musicians.

For more information, call the Southeast Missouri Council on the Arts at 334-9233.



A Great Performance Every Time.



**BOATMEN'S
BANKS**

Member FDIC

Band History

Whether it's an antique clock or a stately old house, perhaps you have felt the sense of satisfaction that comes from restoring and breathing life into some relic of a bygone day. That same preservationist philosophy is the driving force behind the Compton Heights Concert Band of St. Louis and our efforts to promote and perform the fine concert band literature of yesteryear.

The band was organized in 1976 by Band President Harry Swanger, and numbered only 18 members at its first performance. Today the band has grown to include some 70 volunteer, student, and professional musicians from the metropolitan St. Louis area.

Musical Mondays, the band's eight-week summer series of old-fashioned band concerts, held annually since 1980, is held in the Henry Shaw Memorial Bandstand in Tower Grove Park, recently designated a national historic landmark. The band's other popular series, *Sunday Serenades*, held at Francis Park in south St. Louis, began in 1986. They are now two of the city's favorite musical traditions, attracting over 50,000 listeners annually.

In keeping with the Sousa-style program, each concert features a different soloist. Over the years the band has had the honor of performing with such well-known greats as William Warfield, James Christensen (director of music at Disney World in Florida), Dr. Leonard Smith, Debbye Turner (Miss America 1990), and Arturo Sandoval. In 1988 the band hosted the national convention of the Association of Concert Bands, an occasion marked by Missouri Senate and House Resolutions. Most recently the band has been acclaimed by audiences throughout the State of Missouri under the Missouri Arts Council Touring Program and other sponsors.

Dr. Gregory C. Fox was appointed Conductor of the band in September 1992. He holds a Bachelor's degree in Music Education from the State University of New York at Fredonia, and a Master's degree and Doctorate in Music Education from the University of Illinois at Champaign-Urbana. He has been involved with bands ever since his elementary school days in Jamestown, NY. Dr. Fox has studied conducting with such notables as Harry Begian and Carl Topilow. He is also an accomplished tubist, having performed with bands and orchestras in New York, Pennsylvania, Illinois and Missouri. Dr. Fox is a founding member of the Arch Brass, and has organized and conducted the annual Merry Tuba Christmas concert at the St. Louis Galleria since 1989.

To help finance its many expenses, the Compton Heights Concert Band depends upon individual and corporate donations, concert sponsors' fees, a weekly Bingo, sales of souvenirs, and Bandwagon memberships. Support also comes from the Missouri Arts Council, The Regional Arts Commission, The Arts and Education Council, The Monsanto Fund, and the Clifford Willard Gaylord Foundation.

For more information please call the Band office at 776-2227, or write to the Compton Heights Band of St. Louis at 2335 S. Grand, St. Louis, MO 63104.

This is Mercantile Country.

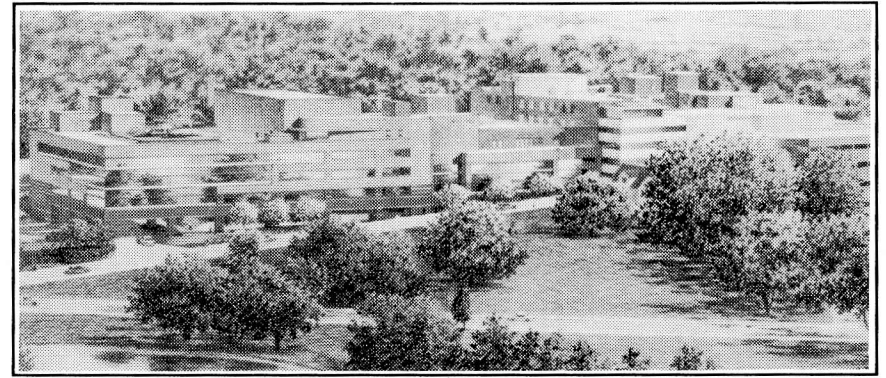
When you look around, there aren't many local banks with as much history, dedication, and stability as Mercantile Bank. We're proud to be a part of this community, and will continue to serve our customers better than any other bank around.

**MERCANTILE
BANK**
Member FDIC

Mercantile Bank of Cape Girardeau
325 N. Kingshighway
Cape Girardeau, Missouri 63701
334-0521



**Cape's
Great Italian Restaurant**



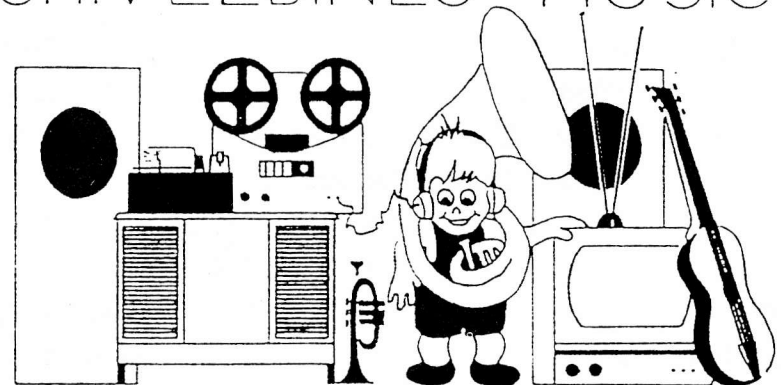
Watch us
Grow to
Serve You
Well!



Your Healthcare Team for Life!

1701 LACEY STREET • CAPE GIRARDEAU, MISSOURI

SHIVELBINES MUSIC



535 BROADWAY
CAPE GIRARDEAU, MO.
314-334-5216 1-800-455-5216

Cape Girardeau Bicentennial Celebration Concert

Capaha Park, Cape Girardeau, Missouri

Monday, September 6, 1993

6 - 8 p.m.

DR. GREGORY C. FOX, CONDUCTOR

LUCILLE SCHROEDER, ANNOUNCER

MST. SGT. BOB ELLISON, VOCAL SOLOIST

OMER CREECH, EUPHONIUM SOLOIST

TONIGHT'S PROGRAM

THE WASHINGTON POST MARCH John Philip Sousa
GATHERING OF THE RANKS AT HEBRON David Holsinger
ARMED FORCES SALUTE - SING ALONG Bob Lowden
PORGY AND BESS SELECTIONS George Gershwin

Robert Ellison, Baritone Soloist

HIS HONOR MARCH Henry Fillmore
AMERICAN CIVIL WAR FANTASY Jerry Bilik

INTERMISSION

AMERICANS WE Henry Fillmore
BIG BAND FAVORITES Bob Lowden
ALL THOSE ENDEARING YOUNG CHARMS Simone Mantia

Omer Creech, Euphonium Soloist

NIGHT IN JUNE Karl King

Omer Creech, Euphonium Soloist

THE CAROUSEL WALTZ Richard Rodgers
COUNTRY & WESTERN Harold Walters
OVERTURE "1812" Peter Ilych Tchaikowsky
SEMPER FIDELIS MARCH John Philip Sousa

U. S. Recording Companies fund in whole or in part the instrumental music for this performance, as arranged by Local 2-197, American Federation of Musicians.

THE CAISSONS SONG

Over hill, over dale, we will hit the dusty trail
And those caissons go rolling along
Up and down, in and out,
Counter march and left a-bout
And those caissons go rolling along
For it's High, High, He, in the Field Artillery
Shout out your numbers loud and strong
For where e're we go
You will always know
That those caissons go rolling along.

SEMPER PARATUS

So here's the Coast Guard marching song.
We sing on land or sea,
Through surf and storm and howling gale,
High shall our purpose be.
"Semper Paratus" is our guide,
Our fame, our glory too,
To fight to save or fight to die!
Aye! Coast Guard, we are for you!

MARINES' HYMN

From the Halls of Montezuma
To the shores of Tripoli,
We will fight our country's battles
On the land and on the sea.
First to fight for right and freedom
And to keep our honor clean,
We are proud to claim the title
Of United States Marine!

THE U.S. AIR FORCE

Off we go into the wild blue yonder,
Climbing high into the sun;
Here they come, zooming to meet our thunder,
At 'em boys, Give'er the gun!
Down we dive, spouting our flame from under,
Off on one hell-uv a course!
We live in fame
Or go down in flame,
Hey! Nothing'll stop the U.S. Air Force!

ANCHORS AWEIGH

Anchors aweigh my boys,
Anchors aweigh
Farewell to college joy.
We sail at break of day, day, day, day!
Through our last night on shore.
Drink to the foam.
Until we meet once more
Here's wishing you a happy voyage home.

The Bandwagon

NOW IN SEVENTEETH YEAR

The BANDWAGON is a great way to show your support for the Compton Heights Concert Band, so we can continue bringing you some of the finest entertainment around. The BANDWAGON enters its seventeenth year of operation with the 1993-94 concert season.

BANDWAGON benefits include a free subscription to the *SousaFun*, the Band's official newsletter, and advance notice of all band performances. BANDWAGON members also serve as an advisory board to the band and participate in band fundraising, including a weekly Saturday night BINGO. They also provide office help and assist in concert presentations. BANDWAGON members interested in "pitching in" should check the box below, or call the Band at 776-2227. Your BANDWAGON membership will run from May 1993 to April 1994.

All contributions to the Compton Heights Concert Band BANDWAGON are tax-deductible. Memberships may be held jointly by husband and wife.

***Sign up today and have your name listed in the program
in time for our next concert!***

I want to join the 1993-94 Compton Heights BANDWAGON.

Enclosed is my contribution:

- \$250 & up - BANDMASTER \$25 - BAND AIDE
 \$100 - BAND DIRECTOR \$10 - SENIOR BAND AIDE
 \$50 - BAND MEMBER (65 and over)
 Check if renewal of 1992-93 membership
 Check Enclosed Charge (Visa or Mastercard only)

ACCOUNT NUMBER _____

EXPIRATION DATE _____

Please make check payable to: COMPTON HEIGHTS BAND, INC.

Name _____

Address _____

Telephone: Home _____ Office _____

- I am willing to volunteer
 My donation will be matched by: _____

COMPANY OR OTHER

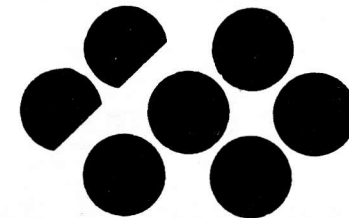
Mail to Compton Heights Band, 2335 S. Grand, St. Louis, MO 63104

If you can't find
a Capital Bank in
Southeast Missouri,
you're not in Southeast
Missouri

*a Higher Standard
of Financial Services*

**CAPITAL
BANK**

Member
FDIC



BIOKYOWA

975 Nash Road
Cape Girardeau, Missouri

975 Nash Road • Cape Girardeau, Missouri

The Band

CONDUCTOR

Dr. Gregory C. Fox

FLUTE

Jennifer Adams
Marion Castellanos
Timothy Hirzel
Jaci Lett
Carol Marsh

OBOE

Jan Parkes
Elaine Powers
Chris Thompson

BASSOON

Anna Christ
Harry Swanger

CLARINET

Chris Albers
Tim Bainter
Mary Bartholomew
Sidney Boxer
Robert Brasier
Luann Brown
Don Cavalli
Paul Coates

Lowell Fellingner

William Findlay
John Kennedy
Tony Lordi
Jeanmarie Mertens
Connie Orear
Mary Shepherd
Rebecca Shiflet
Robert Shiflet

BASS CLARINET

Dolores Ullrich

ALTO SAX

John Grothe
Stephen Walker

TENOR SAX

Nancy Christen
Jay Hartig

BARITONE SAX

John Pierson

TRUMPET

Nancy Bender
Charles Duncan
Lars Fox
John Gacioch
Scott Hartman
Mark Hasenstab
Tom Orear
Joe Serber
Ken Tiefenbrunn

FRENCH HORN

Ann Arias
Allison Felter
Janet Hauck
Lorraine Sharp
John Thomas

EUPHONIUM

Matt McCready

TROMBONE

Bruce Campbell
B.J. Fullenkamp
Jennifer Hargett
Rich Weber
Jeff Weiss

TUBA

Kelley Kesterson
Jon Schroeder
Donald Ullrich

PERCUSSION

Scott Harder
Robin Hendry
Adam Kopff

BAND OFFICERS

President;
Harry Swanger
Vice President;
Jon Schroeder
Secretary;
Stephen Walker

BOARD OF DIRECTORS

Don Cavalli	Jon Schroeder
Jay Hartig	Harry Swanger
Adam Kopff	Stephen Walker
Jeanmarie Mertens	



**"Look Out Future,
Here Comes Cape Girardeau!"**

Sponsored by:

The Cape Girardeau Bicentennial Commission; The Southeast Missouri Council on the Arts; Missouri Arts Council Touring Program; The Compton Heights Concert Band of St. Louis; The Music Performance Trust Funds as arranged by Local 2-197, American Federation of Musicians.



The Cape Girardeau Bicentennial Commission *will present...*

September, 1993

- 17 Lecture Series - Cape Girardeau's Cemetery Architectural Heritage. Speaker: Dr. Richard Betterly. 7:30, Crisp Hall, SEMO State University.
- 23 Lecture Series - Religious History of Southeast Missouri. Speaker: Dr. Martin E. Marty. 7:00, Academic Auditorium, SEMO State Univ.

October, 1993

- 3-29 Naeter Collection from the Southeast Missouri Art Shows, Gallery 100, SEMO Council on the Arts.
- 15 Lecture Series - Cape Girardeau in the Twentieth Century. Speaker: Dr. Frank Nickell. 7:30, Crisp Hall, SEMO State University.
- 15-17 Bicentennial Art Exhibition - ArtsCape '93: A Bicentennial Open Art Exhibition with Demonstrations and Performances. University Center, SEMO State University, SEMO Council on the Arts.

November, 1993

- 5 Lecture Series - Community Sharing Session. 7:30, University Staff and Community. Crisp Hall, SEMO State University.